

Summary

The Sawtooth is recognized in the south-central Alberta Plains and in Montana north and west of the Sweetgrass Arch. Thicknesses are highly variable, as the Sawtooth overlies a high-relief surface sculpted in Mississippian carbonates by pre-Jurassic erosion. At the type locality the Sawtooth is 5 m (16 ft) thick; it thins eastward and pinches out over the Sweetgrass Arch, except in areas of southern Alberta, where a thin sandstone remains. The northern subcrop edge in Ranges. 11-15W4 in southern Alberta is deeply dissected by pre-Cretaceous erosion.

Play Synopsis

Fluid	Oil, 25 to 29 API
Pay Thickness	3.3m to 7m
RF (Primary)	1.8%
Fm. Temp.	32°C
Active operators	N/A
Completions	Open hole, liner
Depth	950m
Lithology	Sand/Clastic
Average Porosity	12 to 18%
Water Saturation	30%
Type Well EUR	106 mboe
Type Well IP90	67 boed

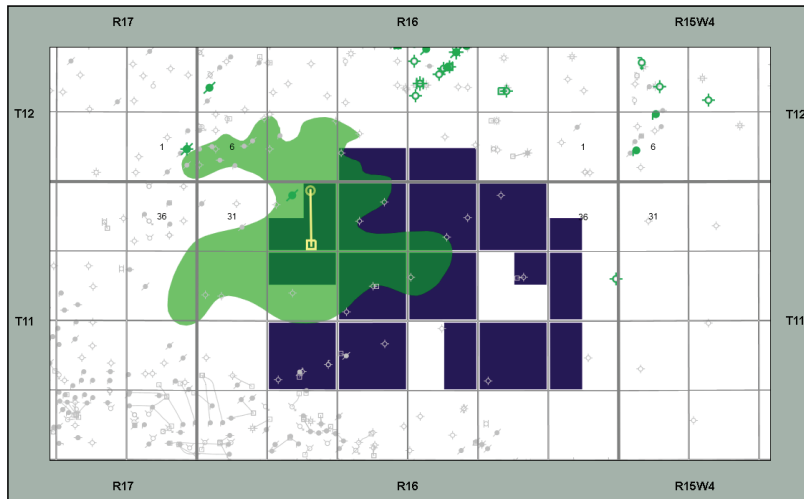
Capital Costs

DCE&T: \$750M

With Lessor Royalties at 20%

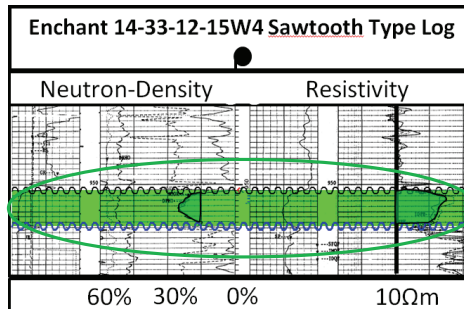
IRR BT: 124%
Payout: 1.1 years
F&D: \$7.11/boe
Netback (IP 90): \$35.73/boe
Recycle Ratio: 5.0

Sawtooth Oil Pool Map - Enchant



	FRU Fee - Available Sawtooth P&NG		CHL Fee - Available Sawtooth P&NG		Sawtooth Oil Pool
	Sawtooth Producers		Sawtooth RR since 2016/01		Sawtooth Locations

Offset Well Log



Type Curve Analysis

